

\pm charged locations

20kw - 'Step By Step' Instructions (Powering Up)

ALWAYS FOLLOW THESE INSTRUCTIONS

1 – Hold down the 'reset' buttons on all 10x batteries until the lights come ON. (marked in red dots below).
(Batteries found on both sides of the pod)



2 - Red 'Alarm' lights will come on next to the reset button. **Wait until all of them have gone off before moving to the next stage.**

3 – Switch the breakers on all the batteries on both sides. (Marked in yellow dots below)

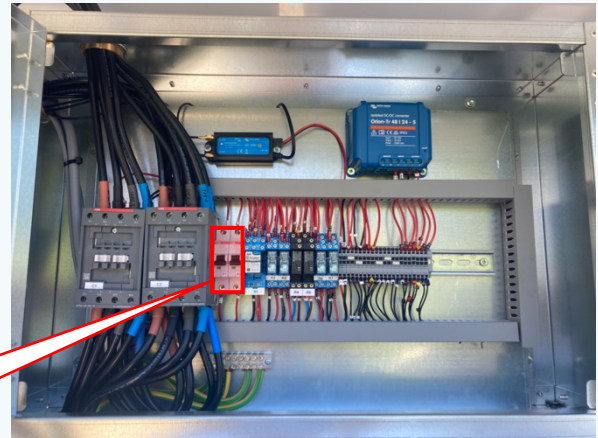


4 - The 'Alarm' lights will once again light on the batteries. **Wait until all of them have gone off before moving to the next stage.**

5 – Switch the breakers (F1 & F2) on behind the control panel.



F1 & F2 breakers behind this box



F1 & F2 marked here

Once F1 & F2 have been switched the screen will come on.



6 – Switch the 3x inverters (blue boxes) to the 'ON' position starting with the left hand one and work right. (N.B. They never need to be on the 'charger only' position)



7 – After 20x seconds the Pod is ready to run. The screen will say 'inverting' when ready.

20k 'Step By Step' Instructions (Powering Down)

****Repeat the instructions above in the opposite direction****

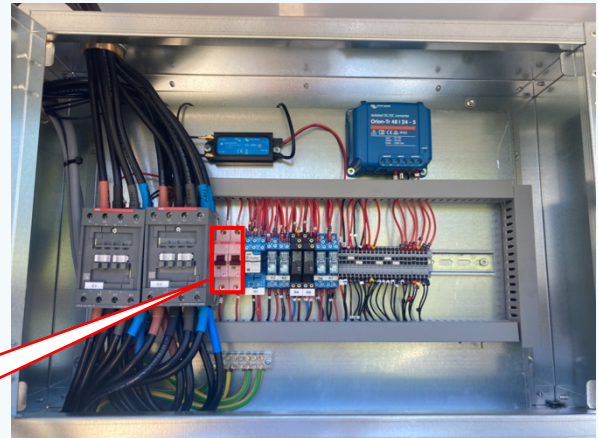
1 - Switch the 3x inverters (blue boxes) to the 'OFF' position starting with the right hand one and work left.
(N.B. They never need to be on the 'charger only' position)



2 – Switch the breakers (F1 & F2) OFF behind the control panel.



F1 & F2 breakers behind this box



F1 & F2 marked here

3 – Switch the breakers OFF on all the batteries on both sides. (Marked in yellow dots below)



4 – Hold down the ‘reset’ buttons on all 10x batteries until the lights switch OFF. (marked in red dots below).
(Batteries found on both sides of the pod)



5 – Once ALL batteries fully switched off the pod is ready to be towed.